

---

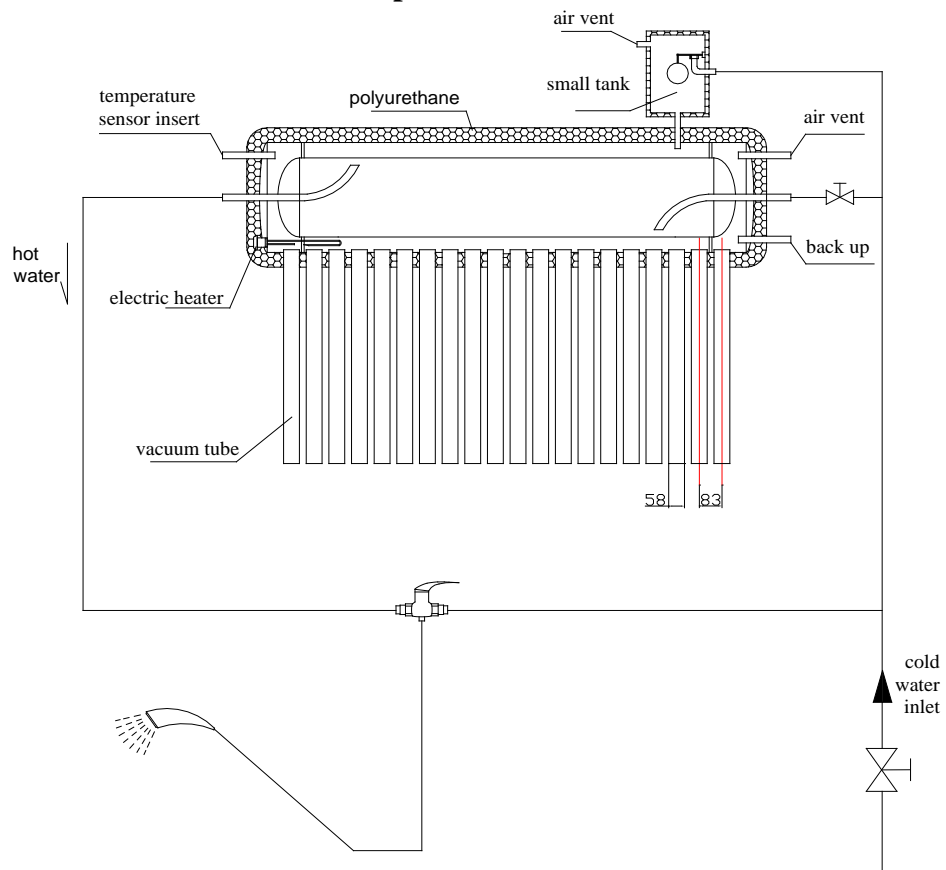
## I、 Solar Water Heater with double tank: pressure model





**This model is TZCD58/1800-30S:**

**TZ** means Sunrain brand.  
**CD** means the outer tank material is painted steel-0.4mm.  
**58/1800** means the specification of the vacuum tubes.  
**30,** means the number of the vacuum tubes  
**S,** means the double tank pressurized model.



### Technical data:

model		TZ58/1800-AS		
Number of tubes		A=20	A=24	A=30
Specification of tubes		58/1800		
Volume of water tank		200L	240L	300L
Electric heater		Yes/no		
The outer Tank	materiel	Painted steel-0.5mm/SUS304-0.5mm		
	diameter	Φ520mm		
The inner Tank	materiel	SUS304-0.55mm		
	diameter	Φ410mm		
small inner tank	materiel	Stainless steel 316L-1.2mm		
	diameter	Φ315mm		
insulation	materiel	Polyurethane(imported from Italy)		
	thickness	55mm		
Frame		Coated galvanized steel-1.5mm		
Reflector		Surface oxidation Aluminium		
Gross weight(Kg)		71	79	89
20GP/40GP/40HC		32/68/72	26/56/60	22/46/52

### The characteristic:

1、 The hot water tank is as a heat energy resource, the small inner tank as a heat exchanger!

2、 The water you are using is always fresh.

3、 The water tank is working under non-pressure, but the inner small tank is working under pressure!

4、 The inner small tank materiel is 316L-1.2mm, and is a closed system.

5、 Because the inner small tank is a closed system, the hot water flow rate is equal to the

cold water flow rate, more higher pressure cold water supply, more larger hot water flow rate. So it is comfortable when you bath.

6、 The all system is working automatically, the water in the tank is fill with small tank automatically.

7、 When you want to use the hot water, please open the hot water valve, then the hot water will be push out by the cold water pressure.

8、 The cold water supply valve is always open.

9、 If no sunlight for several days, you can use the electric heater to heat the water in the tank.

